

CERTIFICATE COURSE ON CSR (2024)

INVEST IN LEARNING NEW SKILLS | ADVANCE YOUR CAREER





Table of Contents

| | |
|--|----------|
| About Centre..... | 3 |
| Certificate Course on CSR..... | 4 |
| Key Features..... | 5 |
| Who should attend?..... | 5 |
| Why choose us?..... | 5 |
| Module 1: CSR & Law..... | 6 |
| Module 2: Life Cycle of Developmental Projects..... | 7 |
| Module 3: ESG & CSR..... | 8 |
| Learning Outcome..... | 9 |



ABOUT CENTRE

The Centre for Excellence is a joint endeavor of **Federation of Indian Chambers of Commerce & Industry (FICCI)**, a rallying point for free enterprise in India since 1927 and the **Aditya Birla Group** – a prominent business group with a mission to deliver superior value to customers, shareholders, employees and society at large.

As a resource centre, the Centre for Excellence provides strategic direction to the development of inclusive and holistic CSR practices; create synergy by providing platform to various stakeholders to share their experiences, learn, exchange ideas and support partnerships that add value to business and recognise and reward business enterprises contributing towards sustainable and inclusive development.

Certificate Course on CSR

Welcome to our comprehensive CSR online course designed to equip you with the essential knowledge and skills to navigate the intricate landscape of Corporate Social Responsibility (CSR) Law, Program Management, and Environmental, Social, and Governance (ESG) principles. Whether you're a seasoned CSR professional, legal advisor, sustainability enthusiast, or business executive, this course offers a unique opportunity to delve into the core aspects of CSR and emerge as a proficient leader in sustainable business practices.

Course Overview:

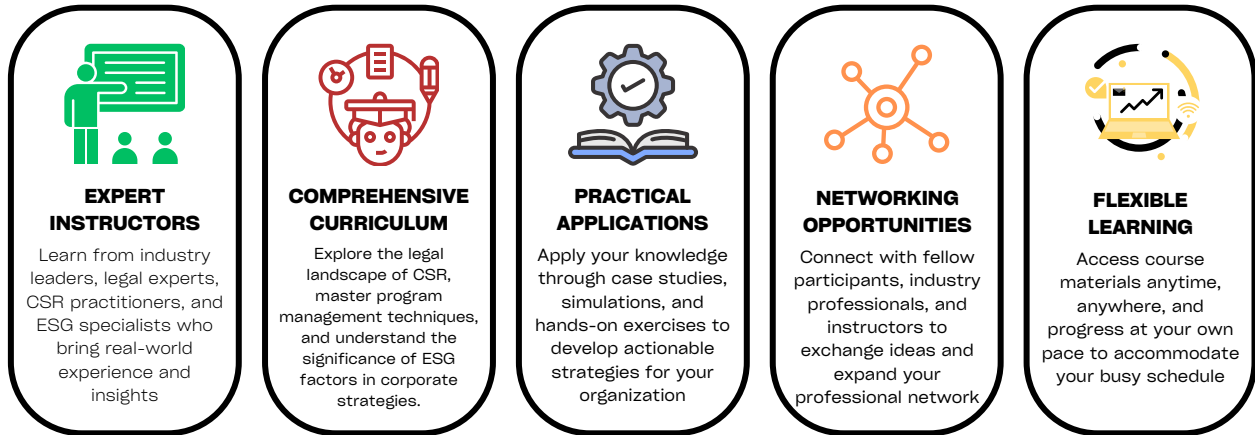
1.Duration: Flexible online learning platform accessible at your convenience.

2.Modules: Dive deep into CSR and Law, Life Cycle of Development Projects and ESG integration through expertly curated modules.

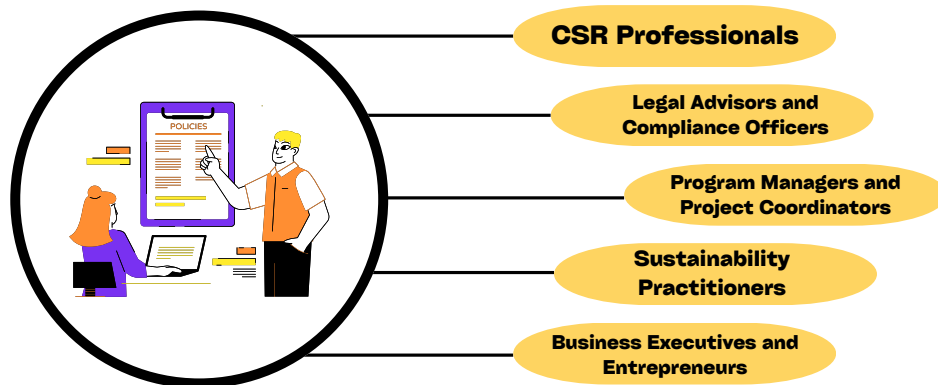
3.Format: Engage in interactive live video lectures, case studies, discussions, and practical exercises for an immersive learning experience.

4.Certification: Earn a certificate upon successful completion, validating your expertise in CSR, Law, Program Management and ESG integration that positively contributes to society and the environment while achieving better business results.

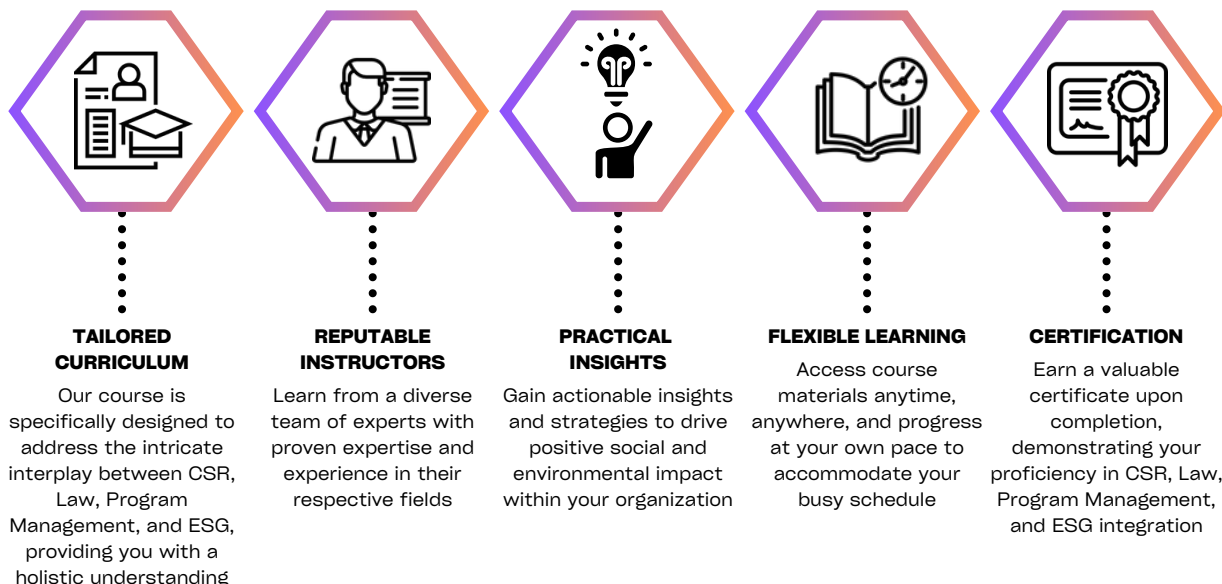
KEY FEATURES:



WHO SHOULD ATTEND:



WHY CHOOSE US?



MODULE 1: CSR and Law

**Date: 30 May'24 - 19 July'24 | Total Hours: 32 Hours approx.
Days: Thursday & Friday | Time: 3:30 PM - 5:30 PM**

TOPICS COVERED:

1. Overview

- A) Socio-Economic aspects of CSR
- B) CSR in pre-CSR era
- C) CSR by PSUs
- D) Global perspective
- E) Report of High-Level Committee on CSR

2. Governing Law

- A) Section 135 of the Companies Act 2013
- B) Calculate eligibility and quantum of CSR (S. 198 of CA 13)
- C) Companies (Corporate Social Responsibility Policy) Rules 2014
Taking MCA FAQs along

CSR Policy Formulation and CSR Project Management and Implementation

1. CSR Policy Formulation

- A) Ingredients of CSR Policy
- B) How to prepare a CSR Policy
- C) Disclosure requirement of CSR Policy
- D) Insights into CSR Policy of a prominent listed company

2. CSR Project Management & Implementation

- A) Identifying & structuring the right project
- B) Mode of implementation

CSR Activities & Projects

- A) Schedule VII of Companies Act 2013
- B) Need Assessment

CSR Reporting- Monitoring, Evaluation & Reporting

- A) CSR Reporting Process
- B) Monitoring, Evaluation & Reporting
 - B.1) Administration aspects
 - B.2) Impact Assessment

MODULE 2: LIFE CYCLE OF DEVELOPMENTAL PROJECTS

**Date: 25 July'24 - 13 Sep'24 | Total Hours: 32 Hours approx.
Days: Thursday & Friday | Time: 3:30 PM - 5:30 PM**

This module aims to equip participants with a comprehensive understanding of Development Project Management within the context of Corporate Social Responsibility (CSR). By the end of this module, participants will:

- Gain foundational knowledge in Development Project Management and understand its necessity in achieving sustainable development goals.
- Understand the concepts of research relevant to development projects, encompassing both qualitative and quantitative methods.
- Acquire skills in performing need assessments for development projects, utilizing various analytical tools and methodologies and initiate the foundation of ecosystem building through comprehensive community engagement.
- Learn the intricacies of project planning and designing, including risk management, stakeholder analysis, and the formulation of effective partnerships.
- Understand the principles of monitoring and evaluation in project management and the significance of impact assessment in measuring the long-term success and sustainability of projects.

1. Introduction to Development Project Management.

- Introduction to Development Project Management,
- Need of Project Management
- Life Cycle of Project Management
- Constraints of Project Management
- Relevance of SDGs in Development Project Management,

2. Research in Development Projects

- Need of Research in Development Projects
- Research Methodology
- Qualitative & Quantitative Research Methods
- Type of Data Collection.

3. Need Assessment for Development Projects

- Definition, Scope, Importance, Objectives
- Steps in Needs Assessments
- Methods for Need Assessment

4. Project Planning & Designing

- Scope of Project Design.
- Designing Objectives and Expected Outcome of the Project
- Risk Management in Project Planning
- Baseline Assessments.
- Stakeholder Analysis
- Building Effective Partnerships and Collaborations
- Project Planning

5. Monitoring & Evaluation

- Project Monitoring
- Project Evaluation
- Result Based Management

6. Impact Assessment

- Scope, Importance and Need for Impact Assessment
- Frameworks of Impact Assessment

7. Individual Presentations by Participants.

MODULE 3: ESG & CSR

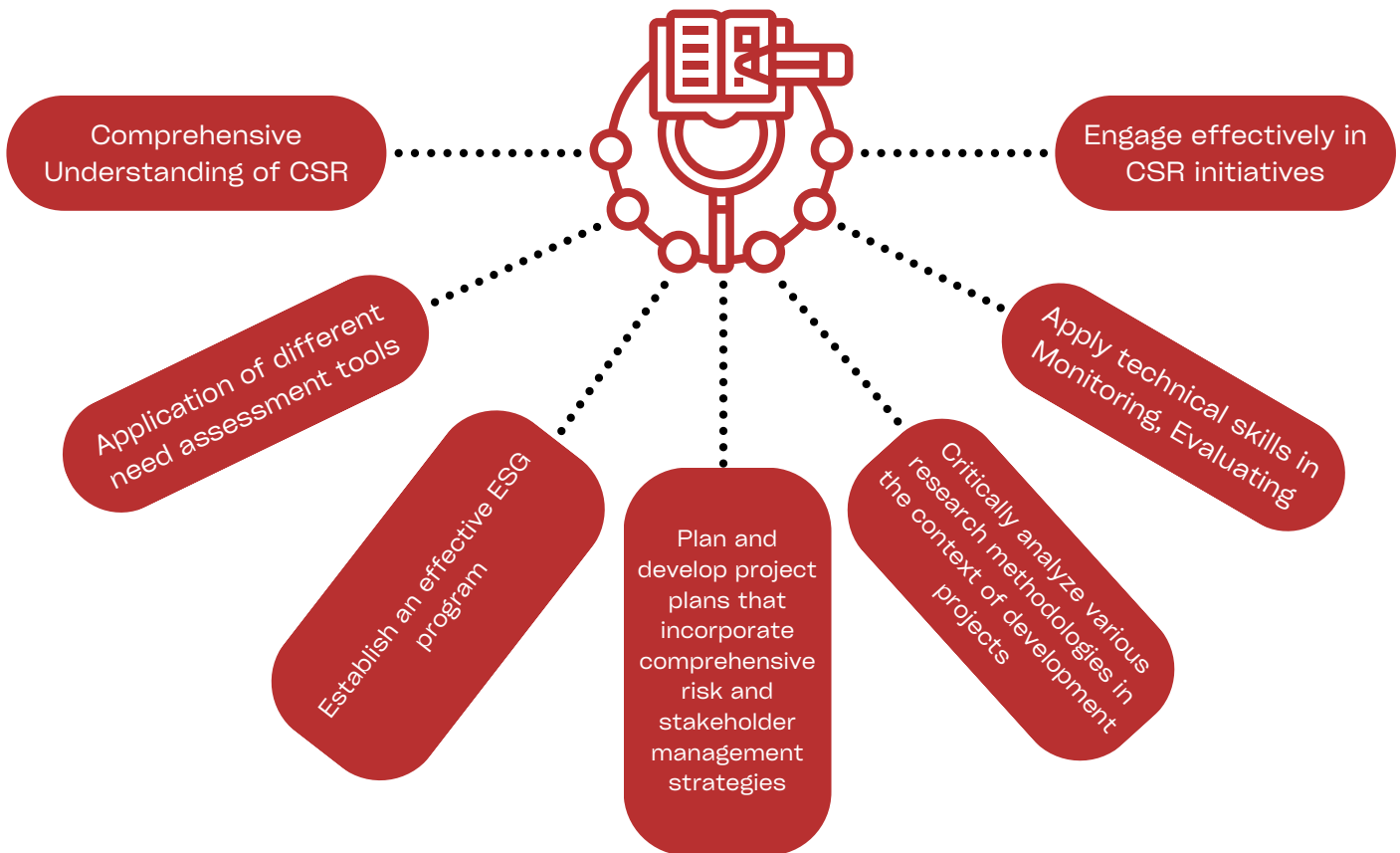
**Date: 19 Sep'24 - 15 Nov'24 | Total Hours: 32 Hours approx.
Days: Thursday & Friday | Time: 3:30 PM - 5:30 PM**

In this course you will discover how to establish an effective ESG program that positively contributes to society and the environment while achieving better business results. This course will cover the subject matter and cases studies to help you demystify ESG and lead your company towards establishing an effective ESG program or improving your current one.

Course Highlights:

- Introduction to sustainability development, industrial revolutions and UN SDG's
- Understanding key concepts - Lifecycle of plastics, GHG Emissions, Circular Economy, Sustainable Transformation, Earth Overshoot, Waste Management, Water Stress, Climate Change
- Human rights, Occupational health and Safety, Community Engagement
- Application of Code of Business Ethics, Diversity Equity & Inclusion at workplace
- Reporting Frameworks and Rating Scales
- Communicating ESG program to stakeholders & Conducting ESG Assessments

LEARNING OUTCOMES:



FEES:

INR 75,000 + 18% GST= INR 88,500

**FICCI Members Discount - Flat 10%*

For queries:

Ms.Usha Bhagchandani (9810759533 / usha.bhagchandani@ficci.com)

Ms.Aastha Jain (9910099874 / aastha.jain@ficci.com)

DISCLAIMER:

- **KINDLY NOTE THAT A/C NO. 0359018024370 IS CLOSED.**
- **FEES IS NON-REFUNDABLE**